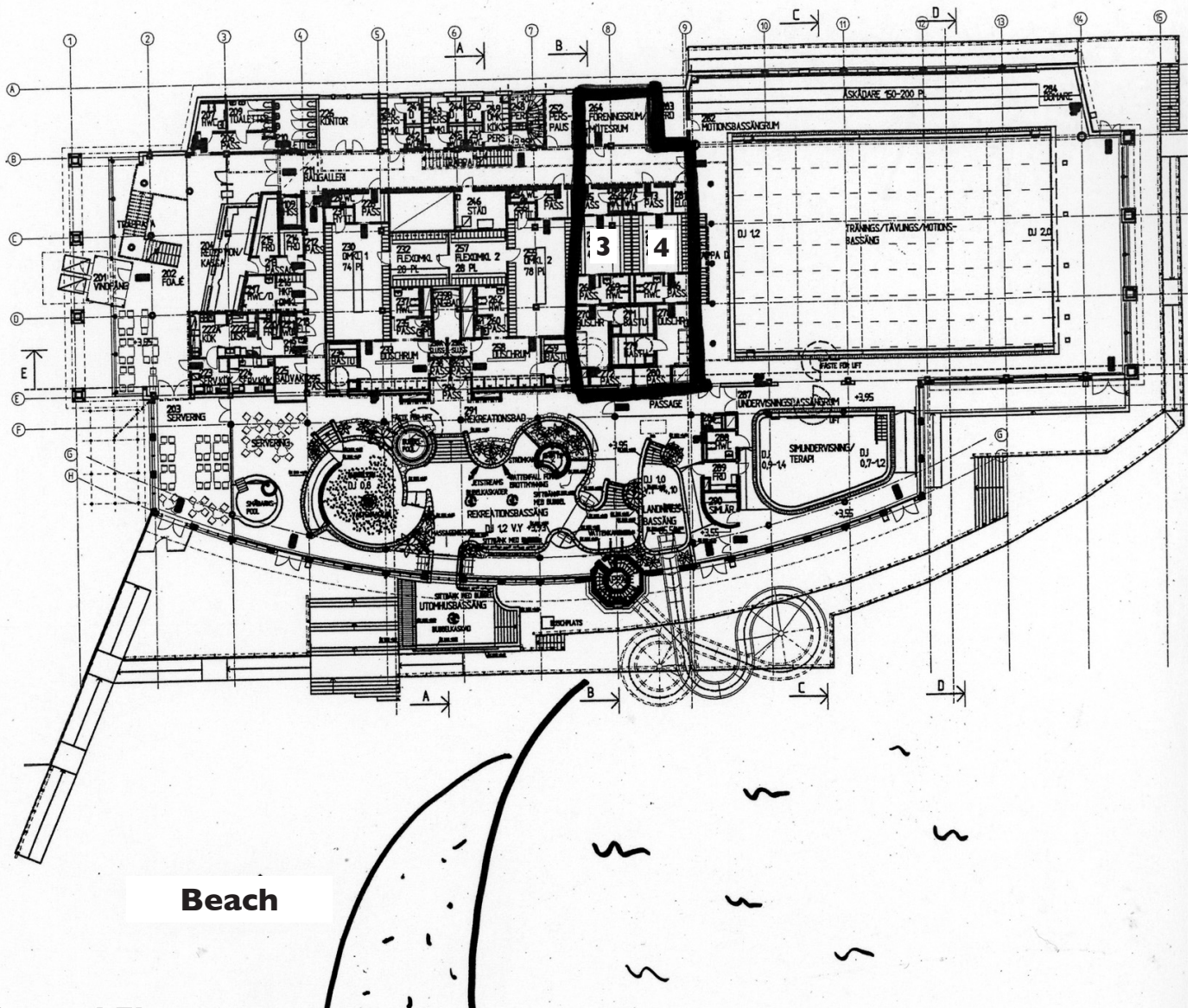


MARIEBAD



Ground Floor

The conference room adjacent to the changing rooms can hold 12 people seated round a large table or 20 people if the table is removed. The room is equipped with TV, video, whiteboard, flipchart and overhead projector. Changing rooms 3 and 4 have 45 lockers, 3 showers and toilets in each room. They are designed to cater for people with disabilities.

First Floor

There is an additional room on the first floor which is part of the relaxation area. This room which has adjacent toilet facilities is larger than the ground floor conference room. The relaxation area itself comprises of 2 changing rooms each with 8 lockers, 2 showers and toilets. There is a communal area with seating, a traditional sauna, a steam sauna and a bubble-pool. The relaxation area can comfortably seat 25 people and is often used by female guests when the ground floor facilities are fully occupied.

